



# User Guide Standards

---

**Luvia Evaluation Kit for 25.3"  
Spectra™ 3100 (EL253TV1)  
Display**

# Table of Contents

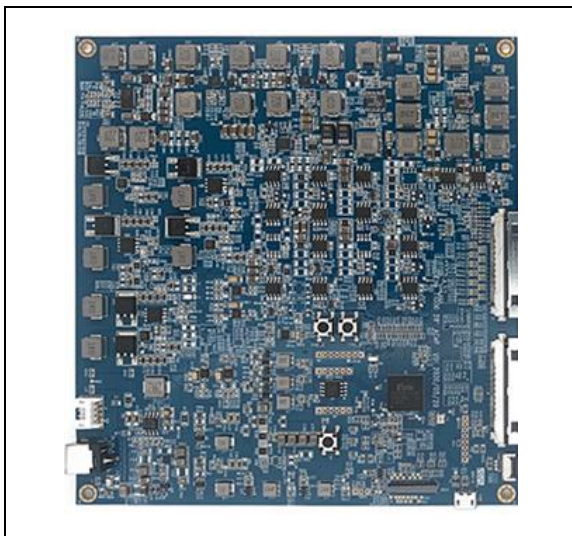
<b>1</b>	<b>Introduction .....</b>	<b>1</b>
	(1) Luvia evaluation kit .....	1
	(2) 25.3 inch Spectra™ 3100 ePaper display.....	2
<b>2</b>	<b>Hardware Setup Guide .....</b>	<b>3</b>
	(1) Hardware requirements for drive 25.3” Spectra™ 3100 ePaper display .	3
	(2) Connect method of Luvia kit with 25.3” Spectra™ 3100 ePaper display .	4
<b>3</b>	<b>How to Demo the Picture .....</b>	<b>5</b>
	(1) Recommend picture format.....	5
	(2) Operating procedures .....	5
	(3) Make sure Luvia kit and 25.3” EPD as well as PC are connected.....	5
	(4) Update picture to ePaper display .....	6
<b>4</b>	<b>Appendix.....</b>	<b>7</b>
	(1) How to minimize artifact.....	7
	(2) How to upgrade firmware.....	7
	(3) How to upgrade waveform .....	8
	(4) How to slideshow.....	9
	(5) How to set VCOM & temperature.....	10
	(6) How Other Features Description for T1000_Demo_AP.exe.....	11
<b>5</b>	<b>Troubleshooting .....</b>	<b>11</b>
<b>6</b>	<b>Contact Information .....</b>	<b>11</b>
<b>7</b>	<b>Legal Information .....</b>	<b>12</b>

# ePaper Display Update SOP

## 1 Introduction

Luvia evaluation kit support to highlight the features and benefits of the ePaper display driven by LVDS interface. This document will provide details on how to operate the Luvia evaluation kit with E Ink Spectra™ 3100 LVDS interface panel. Please make sure if you already prepare following components on hand before starting to operate.

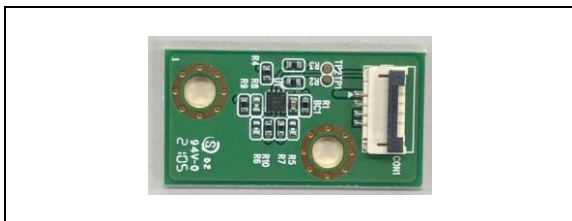
### (1) Luvia evaluation kit



LT-1000 timing control board×1



FFC cable×2



Temperature sensor board×1

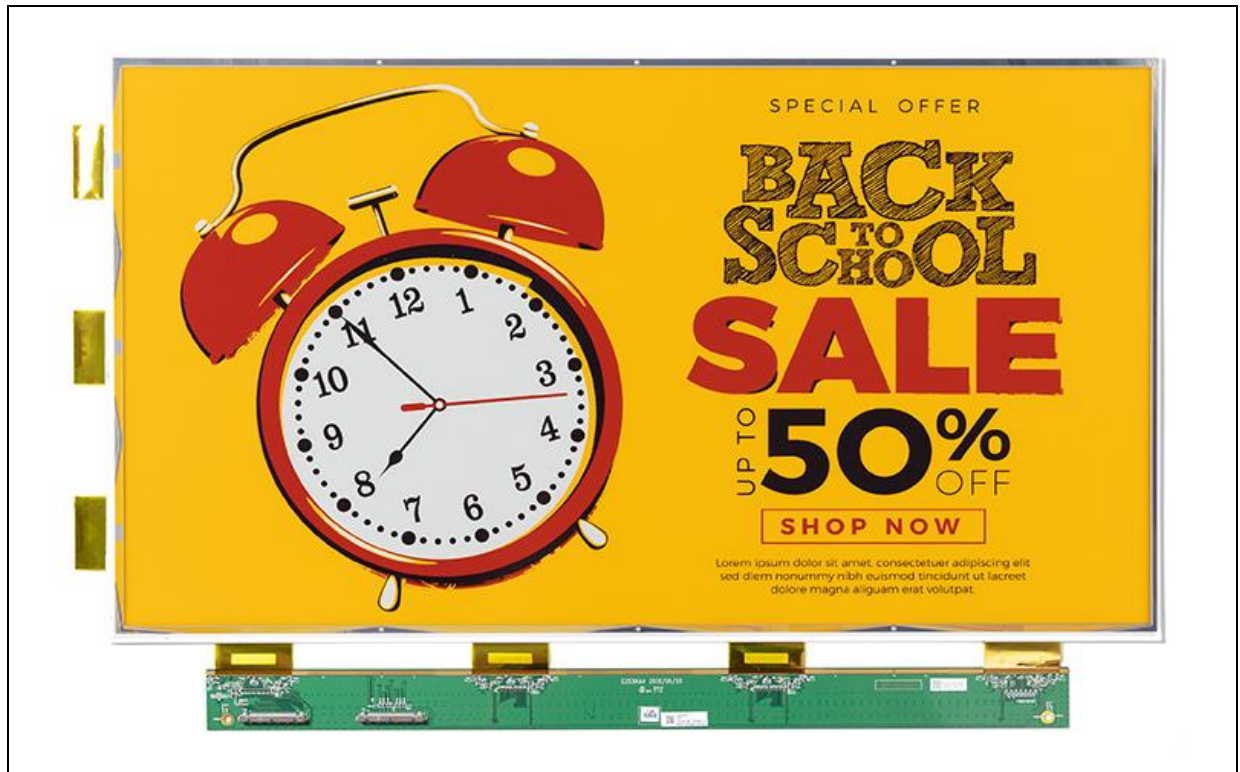


Cable for temperature sensor board



Power adaptor×1

(2) 25.3 inch Spectra™ 3100 ePaper display

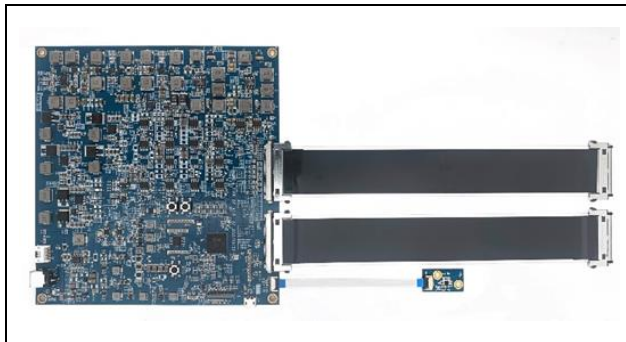


25.3" Spectra™ 3100 ePaper display

## 2 Hardware Setup Guide

This section describes the hardware setup procedures of the Luvia evaluation kit for 25.3" Spectra™ 3100 ePaper display.

### (1) Hardware requirements for drive 25.3" Spectra™ 3100 ePaper display



Luvia evaluation kit



Windows PC (Prepare by customer)



25.3" EPD panel

Table 1 Minimum PC Requirements (Prepare by customer)

<b>CPU</b>	Pentium III 800 MHz or higher
<b>RAM</b>	128MB or higher
<b>Required Software</b>	Windows 7 or higher version
<b>Interface</b>	USB port

## (2) Connect method of Luvia kit with 25.3" Spectra™ 3100 ePaper display

Connect the Luvia evaluation board with 25.3" ePaper display is shown as following figure 2.1.



Figure 2.1

### 3 How to Demo the Picture

#### (1) Recommend picture format

The picture is recommend in BMP (24bit) or JPG (24bit) format and size needs to fit the resolution of 25.3" ePaper display (3200\*1800).

#### (2) Operating procedures

After power up, needed waiting about 50s, the display will show up the E Ink logo. It means system is running successfully.

#### (3) Make sure Luvia kit and 25.3" EPD as well as PC are connected

- Connect the 25.3-inch ePaper display to the Luvia evaluation kit (refer to Figure 2.1)
- The PC is connected to the Luvia evaluation kit via a Micro-USB cable.
- Execute the "T1000\_Windows\_AP.exe" software and click the "Connect" button to ensure that the software is successfully connected to the physical drive. (refer to Figure 3.1)

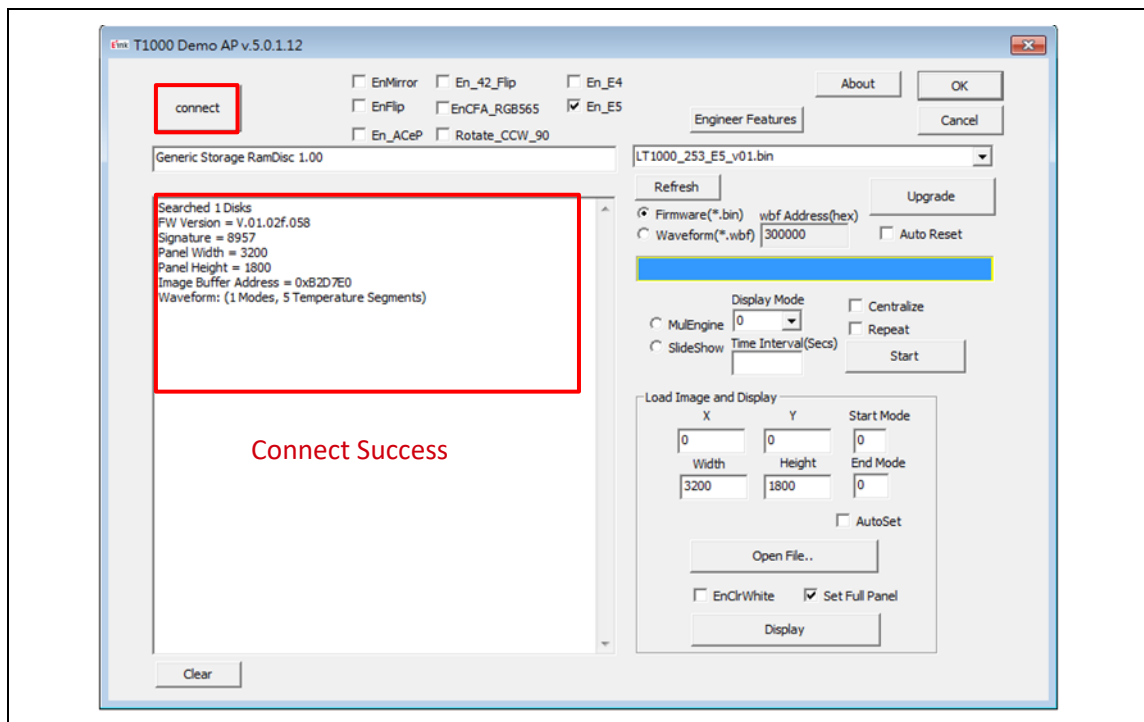


Figure 3.1

#### (4) Update picture to ePaper display

Execute T1000 Demo AP (refer to Figure 3.2)

- Enable “ En\_E5 ” (step 1)
- Enable “ AutoSet ” and “ Set full Panel ” (step 2&3)
- Click “ Open File.. ” to choose the picture (step 4&5)
- Set “ Start mode ” and “ End mode ” to 0 (step 6)
- Click “ Display ” button to show selected picture on ePaper display (step 7)

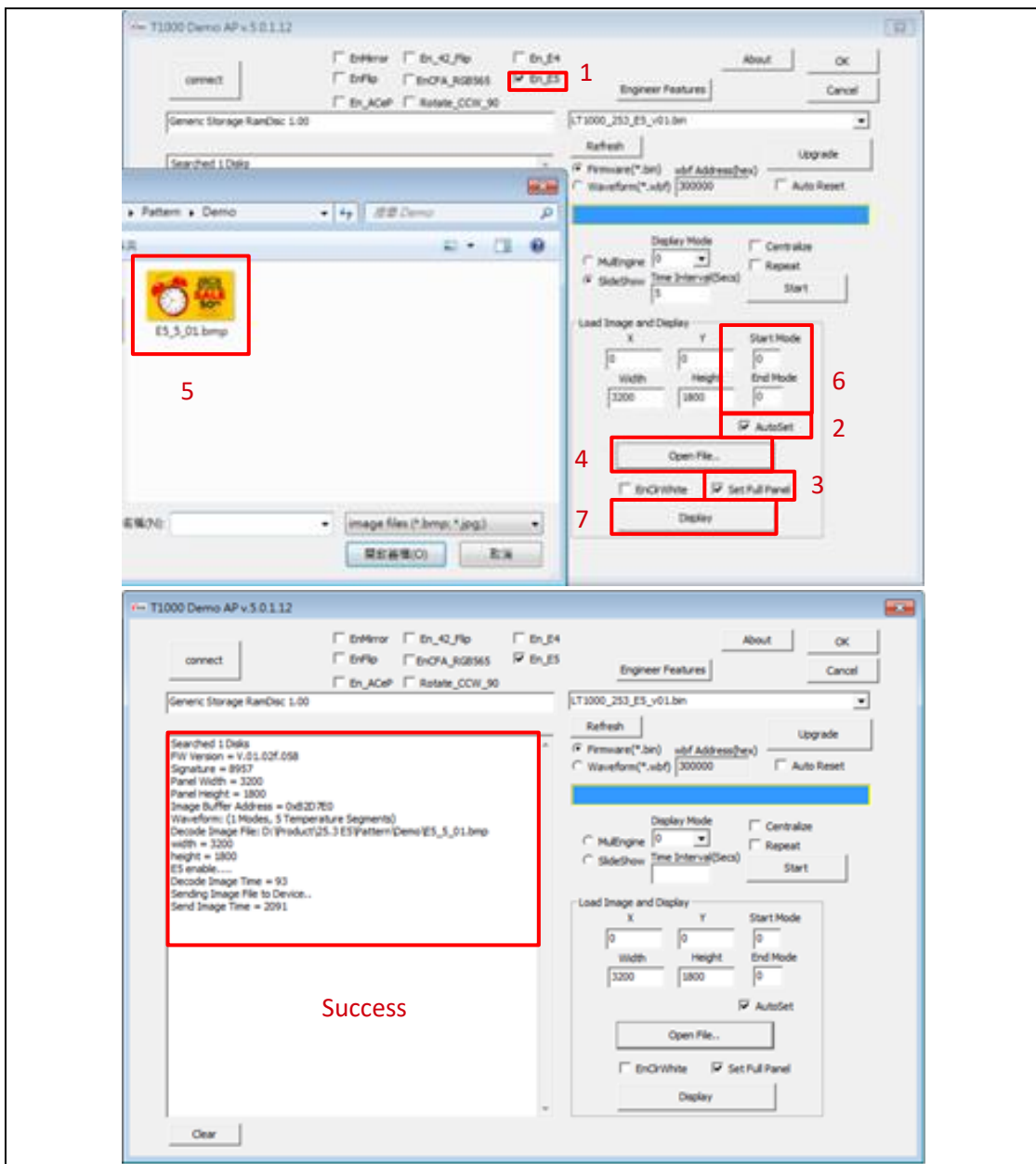


Figure 3.2 Update picture to 25.3" ePaper display



## 4 Appendix

### (1) How to minimize artifact

- Execute T1000 Demo AP(refer to Fig 3.3)
- Select “EnClrWhite” option
- Set “Start mode” and “End mode” to 0,
- Click “Display” button. ePaper display will show white picture. Repeat above steps if necessary. Unselect “EnClrWhite” option after done with minimizing artifact.

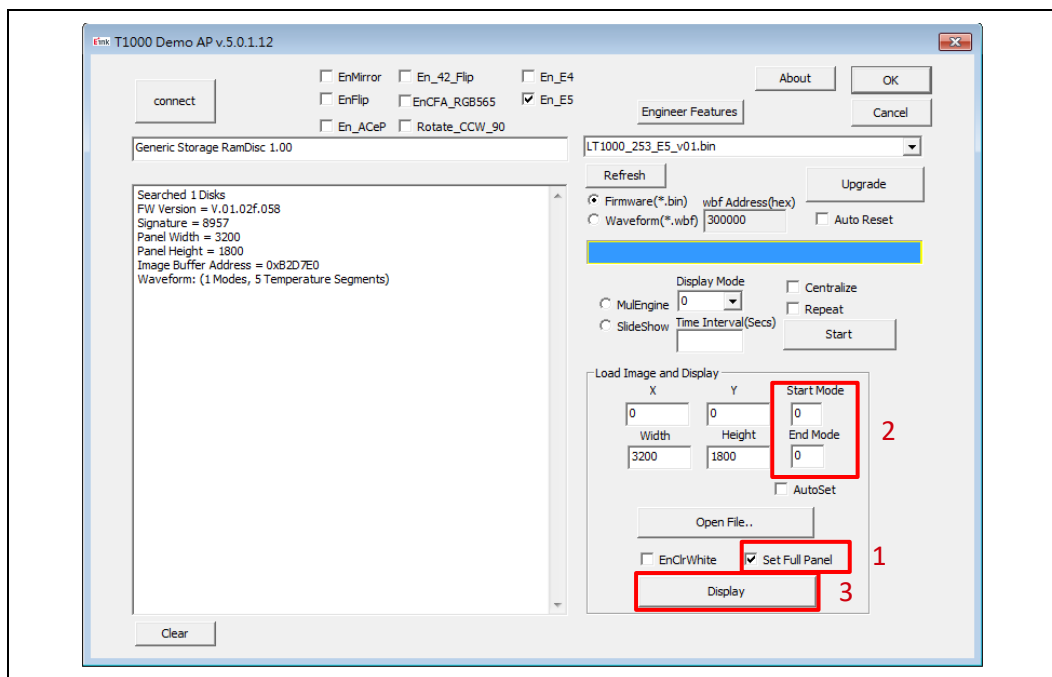


Figure 3.3

### (2) How to upgrade firmware

- Execute T1000 Demo AP(refer to Figure 3.4)
- Click the “connect” button (step 1)
- Choose “Firmware(\*.bin) (step 2)
- Click “Refresh” and “choose the FW you want to use. (step 3&4)
- Click “ Upgrade” (step 5)
- If update is success, please re-plug the power adapter and USB cable (reset)

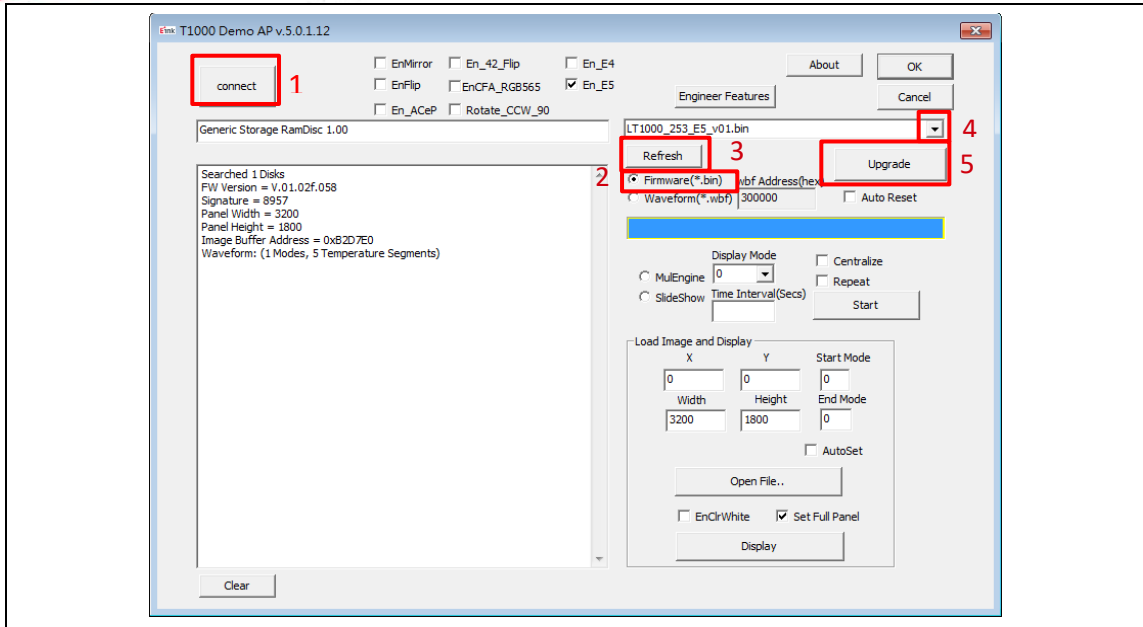


Figure 3.4

### (3) How to upgrade waveform

- Execute T1000 Demo AP(refer to Figure 3.5)
- Click the “connect” button (step 1)
- Choose “Firmware(\*.wbf)” (step 2)
- Click “Refresh” and “choose the WF you want to use. (step 3&4)
- Click “ Upgrade” (step 5)
- If update is success, please re-plug the power adapter and USB cable(reset)

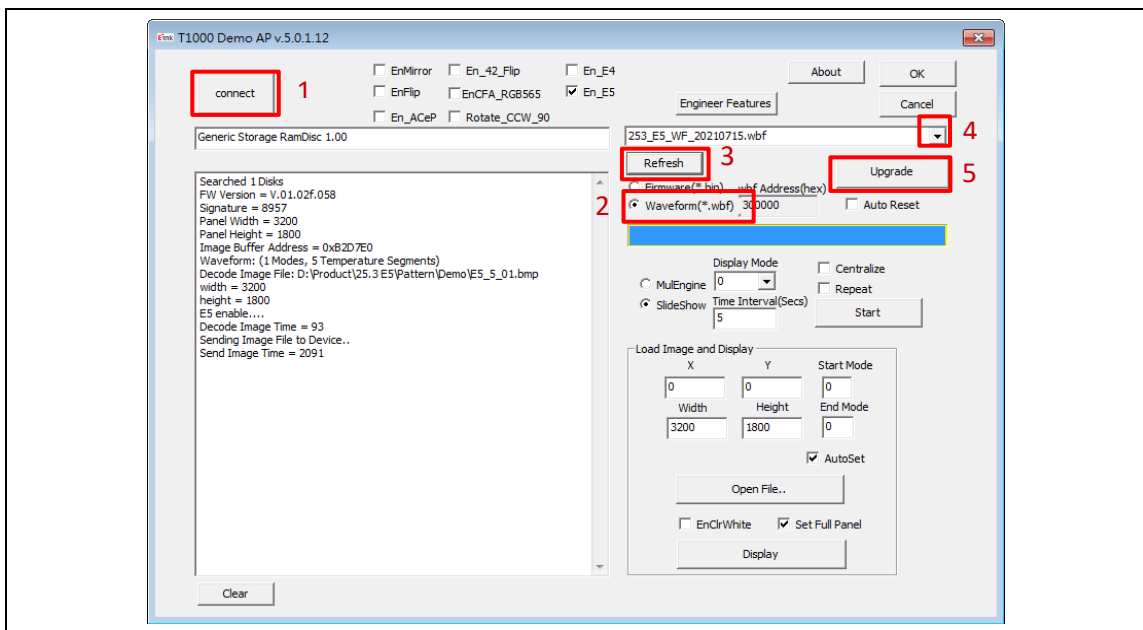


Figure 3.5

#### (4) How to slideshow

- Execute T1000 Demo AP(refer to Figure 3.6)
- Click the “connect” button (step 1)
- Upload all images under the folder name as “SlideShowImages”
- Set “Display Mode” and “Time Interval”
- Select “SlideShow” option and click “Start” button.

#### Note:

- \* If the T1000\_Demo\_AP.exe put in a Demo AP folder, the slideShowImages folder also needs under Demo AP folder.
- \* Time interval requires more than one picture update time.

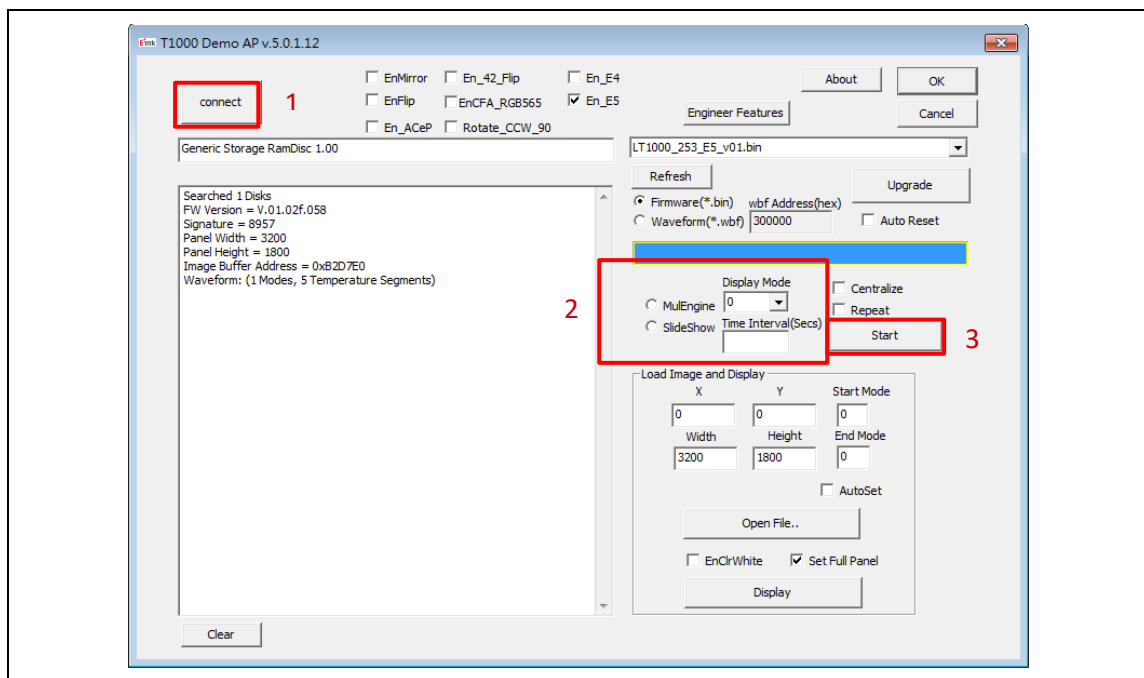


Figure 3.6

## (5) How to set VCOM & temperature

- Execute T1000 Demo AP (refer to Figure 3.7)
  - ◆ Set Vcom
    - Click “Engineer Features “button
    - VCOM Set/Get
    - Set/Get VCOM voltage value.
    - Click “Execute” button to Set/Get VCOM.
    - Click “OK” button
  - ◆ Set temperature
    - Click “Engineer Features “button
    - Temperature Set/Get
    - Set/Get temperature value.
    - Click “Execute” button to Set/Get temperature.
    - Click “OK” button

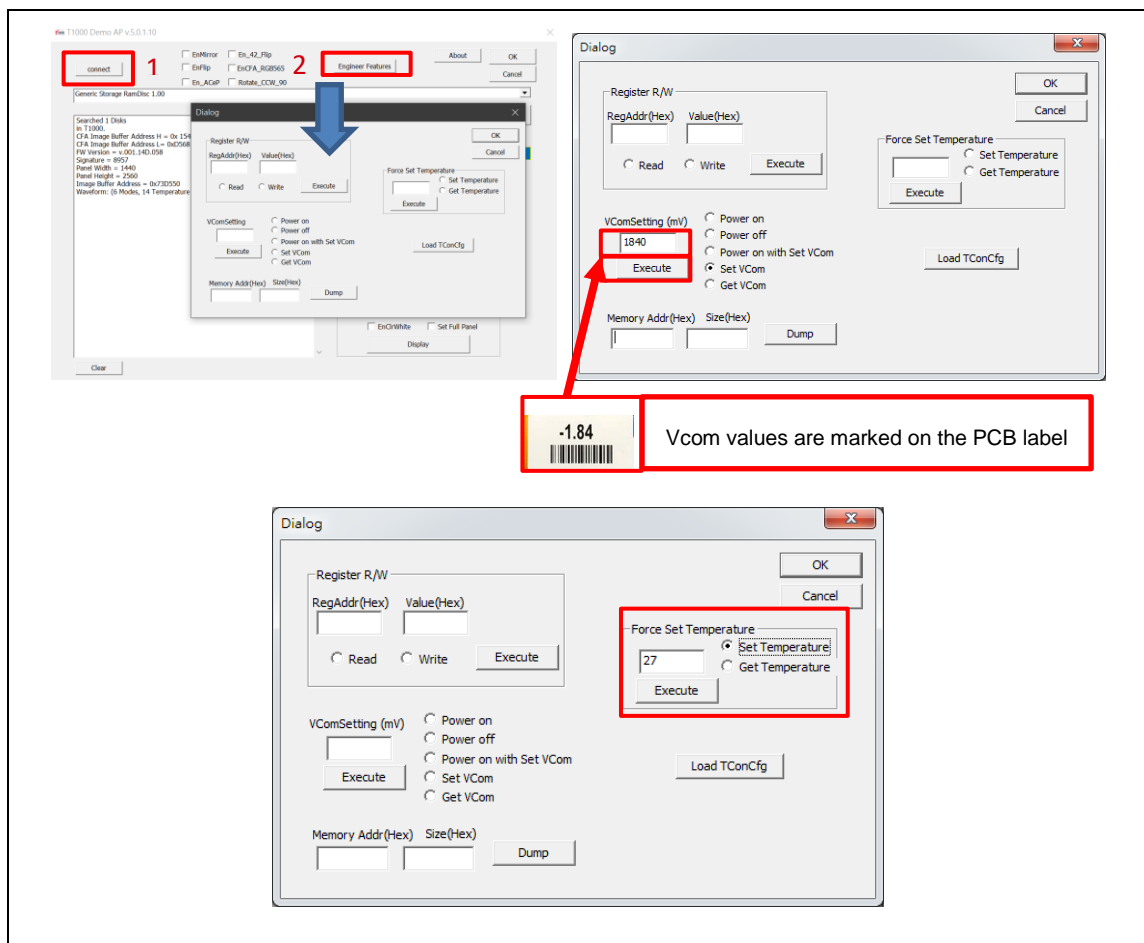


Figure 3.7

## (6) How Other Features Description for T1000\_Demo\_AP.exe

Each of the checkbox described above has to be selected before you load an **image using “Open File” button based on different firmware.**

- EnMirror : Mirror image (source line)
- EnFlip : Flip image (gate line)
- En\_42\_Flip : Only used in 42" EPD.
- EnCFA\_RGB565 : Only used in 31.2" CFA EPD.
- Rotate\_CCW\_90 : Only used in 31.2 BW and 31.2 CFA.

## 5 Troubleshooting

Below is a list of commonly asked questions and basic troubleshooting steps of L-T1000 evaluation board.

Table 4.1 Troubleshooting

Num	Issue	Possible Cause and Solution
1	L-T1000 device is not visible on PC	USB cable damage Replace USB cable.

## 6 Contact Information

For more information, please visit

<http://www.eink.com>

For sales office addresses, please visit

[http://www.eink.com/contact\\_sales.html](http://www.eink.com/contact_sales.html)

## 7 Legal Information

- Definitions

The document is a draft version only. The content is still under internal review and subject to formal approval which may result in modifications or additions. E Ink does not give any representations or warranties as to the accuracy or completeness of information included herein and shall have no liability for the consequences of use of such information.

- Right to make changes

E Ink reserves the right to make changes to information published in this document, including without limitation specifications and product descriptions, at any time and without notice.

- Suitability for use

Products described in this document are intended for development purposes only and comes without any warranty. E Ink accepts no liability for inclusion and/or use of E Ink products in commercial products or applications and therefore such inclusion and/or use is at the customer's own risk. In no event shall E Ink be liable for any direct, indirect, incidental, special, exemplary, or consequential damages (including, but not limited to, procurement of substitute goods or services; loss of use, data, or profits; or business interruption) however caused and on any theory of liability, arising in any way out of the use of the software.

- Applications

Applications that are described herein for any of these products are for illustrative purposes only. E Ink makes no representation or warranty that such applications will be suitable for the specified use without further testing or modification.

- No offer to sell or license

Nothing in this document may be interpreted or construed as an offer to sell products that is open for acceptance or the grant, conveyance or implication of any license under any copyrights, patents or other industrial or intellectual property rights.

- Trademarks

Notice: All referenced brands, product names, service names, and trademarks are the property of their respective owners.

- Revision History

Version	Date	Pag	Description	Author
0.1	2021/08/24		Initial	Stewart